

Ombre Symphony Supply List

Kit Fees

\$20 includes a copy of *Modern Scrap Quilts*.

Optional: Acrylic cutting templates for the block will be available for \$12.

Fabric for class

We will not be able to make the full quilt in one three-hour class; these fabric requirements have been minimized for those traveling. See box for requirements for full quilt.

Solid Background Fabric (off-white in sample): 3-4 strips 3¾" × width of fabric.

Scrappy Fabrics (see below for other color variants): Each scrap should be 3½" square at minimum.

- ▶ **Pinks:** the equivalent of around ½ yard of assorted pinks, light to dark. Please note that the greater the variety of fabrics you can bring, the more work on your gradient we will be able to do. Swapping with classmates using the same colors is also encouraged!
- ▶ **Low volume/light gray:** equivalent of around ¼ yard

Additional Materials

Sewing thread to match the background

Basic sewing supplies (pins, seam ripper, etc.)

3½" square ruler

Recommended (if not purchasing acrylic cutting templates): Heavy-duty template plastic (2 pieces, each approximately 4" square); Rotary cutter (28mm preferred)



Fabric requirements for full quilt

Solid Background Fabric (off-white in sample): 3½ yards

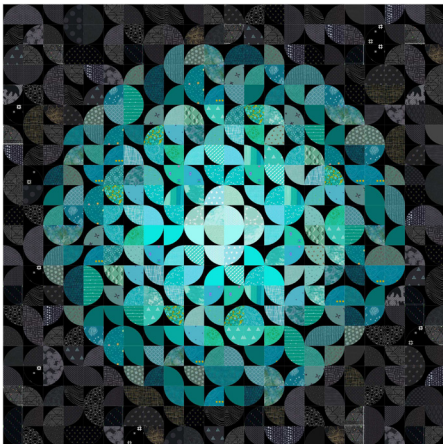
Scrappy Fabrics (see below for other color variants); each scrap should be 3½" square at minimum:

- ▶ **Dark pink scraps:** equivalent to ¼ yard
- ▶ **Medium dark pink scraps:** equivalent to ½ yard
- ▶ **Medium light pink scraps:** equivalent to ¾ yard
- ▶ **Light pink scraps:** equivalent to 1½ yards
- ▶ **Low volume/light gray scraps:** equivalent to 2¼ yards

Color Inspiration

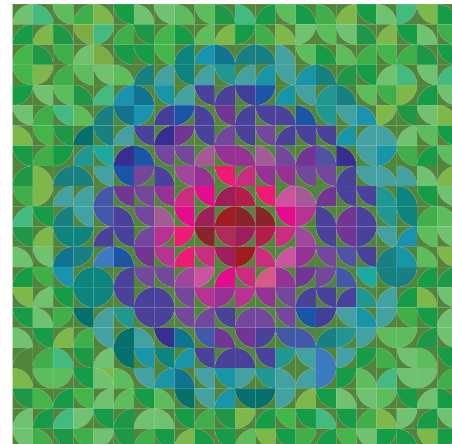
Here are a couple of color variations and their fabric requirements.

Feel free to use these as a springboard for your own color choices!



DARK VERSION

- ▶ Substitute **black solid** for background
- ▶ Substitute **black/dark gray prints** for low volume/gray
- ▶ Substitute **dark teal** for light pink
- ▶ Substitute **medium dark teal** for medium light pink
- ▶ Substitute **medium light teal** for medium dark pink
- ▶ Substitute **light teal** for dark pink



COLOR GRADIENT VERSION

- ▶ Substitute **green solid** for background
- ▶ Substitute **green prints** for low volume/gray
- ▶ Substitute **teal** for light pink
- ▶ Substitute **blue** for medium light pink
- ▶ Substitute **purple and pink** for medium dark pink
- ▶ Substitute **red** for dark pink